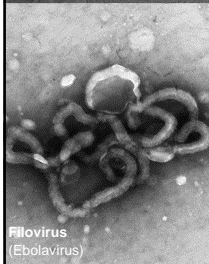


Bacillus anthracis
(anthrax pathogen)



Filovirus
(Ebola virus)

Joint Action on Efficient response to highly dangerous and emerging pathogens at EU level EMERGE

Roland Grunow
Robert Koch Institute

PANDEM Meeting
15th March 2017
Brussels, Belgium

Disclaimer: This presentation has been produced with the support of the European Commission's Consumers, Health, Agriculture and Food Executive Agency (CHAFEA). Its content is the sole responsibility of Robert Koch-Institut, Centre for Biological Threats and Special Pathogens, and can in no way be taken to reflect the views of the CHAFEA or any other body of the European Union.



Co-funded by
the Health Programme
of the European Union

General Information

EMERGE is an EU funded Joint Action (CHAFEA n° 677 066)

ROBERT KOCH INSTITUT



Coordinator:

Robert Koch-Institut (RKI), Berlin, Germany
Contact persons: Roland Grunow / Daniela Jacob

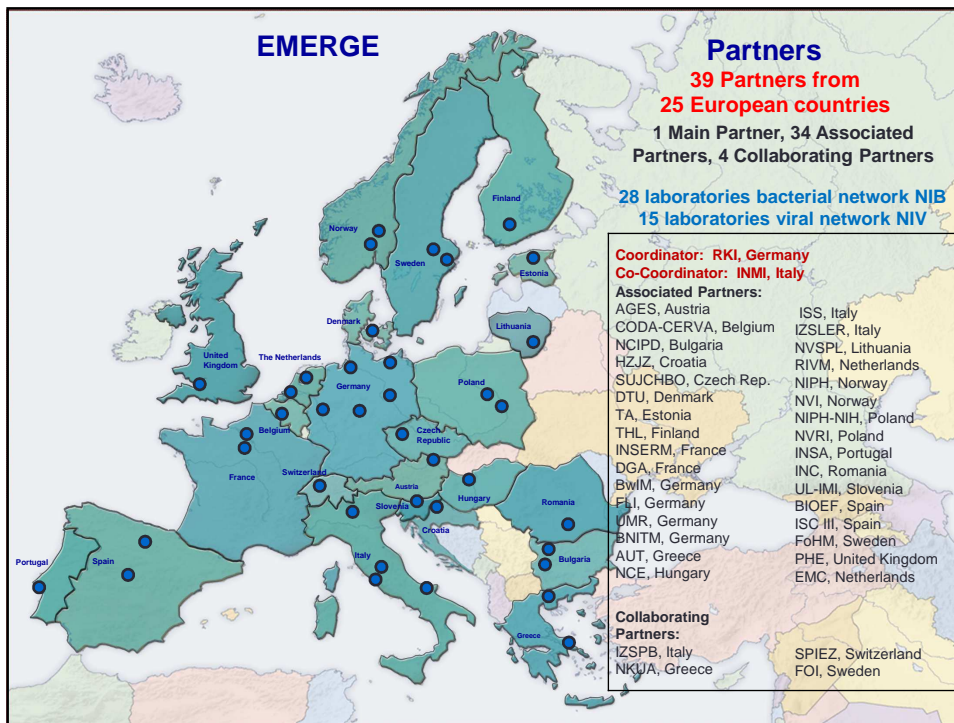
Co-Coordinator:

L. Spallanzani National Institute for Infectious Diseases (INMI), Rome, Italy
Contact persons: Giuseppe Ippolito / Antonino Di Caro

Duration: 1st June 2015 – 31st May 2018 (3 years)

Total EU co-funding (60%): 3.5 Mio EUR

Estimated project costs: 5.8 Mio EUR



EMERGE

Project Summary & General Tasks

European policy (Decision No 082/2013/EU)

>>> There is a **need for an efficient, rapid and coordinated response to high threat pathogens** causing serious cross-border outbreaks. <<<

General Tasks

- To ensure an efficient **response** to serious **emergent and re-emergent cross-border events**.
- To install a coordinated and effective response to such outbreaks by **linking up laboratory networks and institutions**.
- To perform **external quality assurance exercises**, to provide appropriate **trainings** and to ensure laboratory responsiveness, diagnostics and biorisk management during outbreaks.
- **2 modes:**
Inter-epidemic Mode (IEM), and
Outbreak Response Mode (ORM)

15 March 2017 | PANDEM – Final Conference, Brussels | 4

Inter-epidemic Mode (IEM) and Outbreak Response Mode (ORM)

“Inter-epidemic Mode” (IEM)

- Work Packages (WP) will be run as agreed in the Grant Agreement

“Outbreak Response Mode” (ORM)

- Work Packages will be run in an **outbreak mode** (EC and SC decision)
- specific tasks are defined for each WP
- modifications of the work plan
- budget changes and shifts

Inter-epidemic Mode (IEM) and Outbreak Response Mode (ORM)

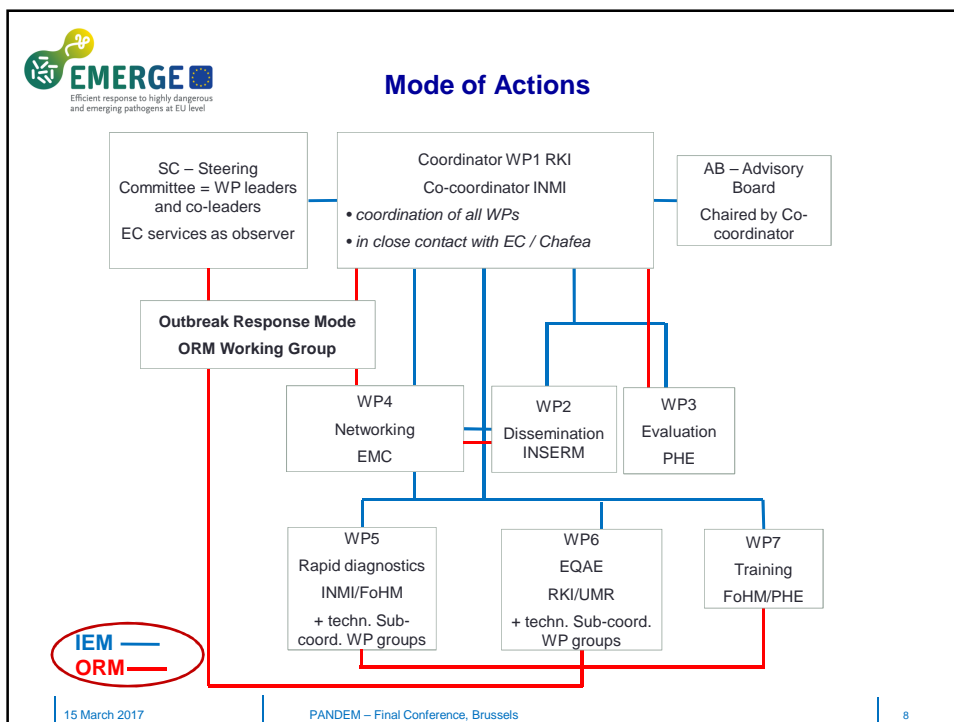
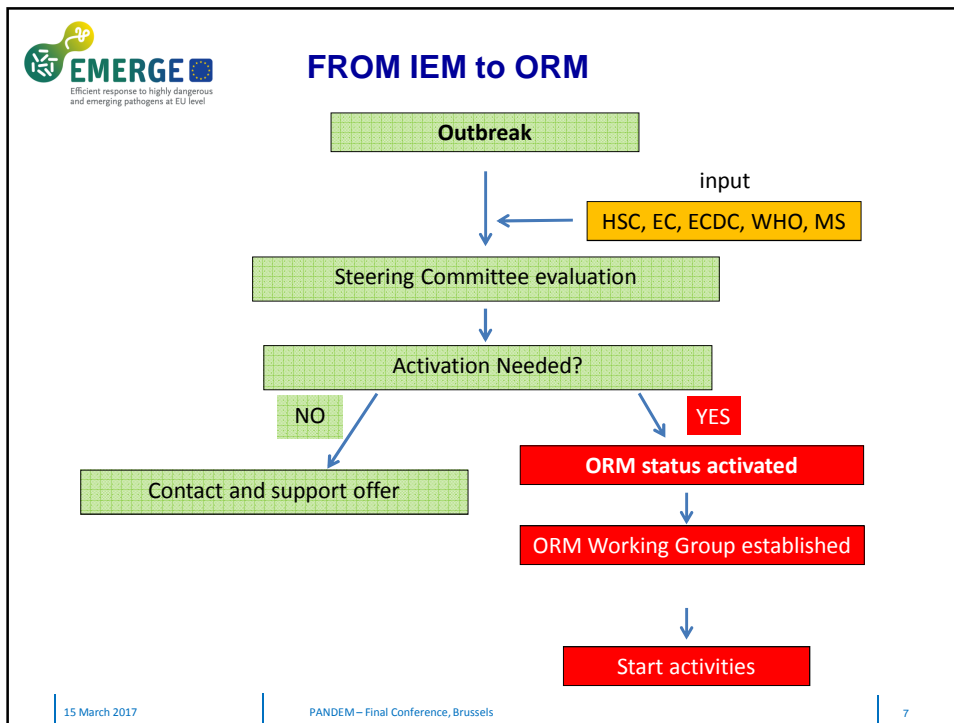
Expected outcomes

“Inter-epidemic Mode” (IEM)

- protocols or guidelines for outbreak management
- increase of diagnostic capabilities
- assessment, validation and improvement of laboratory maintenance and capabilities, biorisk management and diagnostic quality

“Outbreak Response Mode” (ORM)

- supporting the interoperability of networks
- development of specific recommendations for diagnostic approaches and application of best practice approaches for diagnostics
- quality assurances of diagnostics in cross-border infectious outbreaks
- application of ad-hoc training directed to outbreaks
- validation and improvement of biorisk management



Work Packages (WP)

- WP 1** Coordination of the Joint Action - RKI (DE) and INMI (IT)
Implementation, project meetings
- WP 2** Dissemination of the Joint Action activities - INSERM (FR)
Newsletters, website, stakeholder list
- WP 3** Evaluation of the Joint Action - PHE (UK)
Continuous evaluation
- WP 4** Networking of networks for laboratory response - EMC (NL) and INMI (IT)
Meeting of networks 30 Nov 2016, evaluation of diagnostic capabilities
- WP 5** Rapid capabilities for diagnoses - INMI (IT) and FoHM (SE)
3 Working Groups (Metagenomics, Diagnostics BSL4, AST); recommendations
- WP 6** Quality assurance of laboratory diagnostics - RKI (DE) and UMR (DE)
1st EQAE for bacterial and viral part
- WP 7** Training on diagnostics and biorisk management - FoHM (SE) and PHE (UK)
18 training courses organized by 7 providers

Steering Committee (SC) and Advisory Board (AB)

- SC** WP leaders and co-leaders
- AB** DG SANTE, CHAFAEA, ECDC, PHAC (Canada)

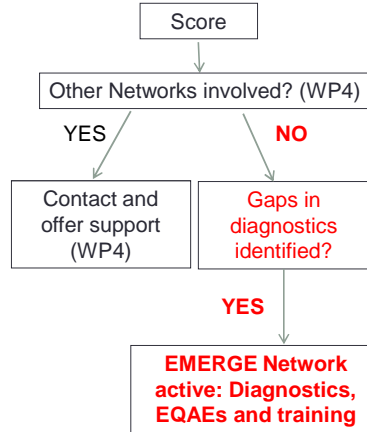
List of agents in focus

<u>Bacteria</u>	<u>Viruses</u>
<i>Bacillus anthracis</i>	Filoviruses (Ebola Hemorrhagic Fever)
<i>Francisella tularensis</i>	Arenaviruses (Lassa Hemorrhagic Fever)
<i>Yersinia pestis</i>	Bunyaviruses (Crim Congo Hemorrhagic Fever)
<i>Burkholderia mallei</i>	Orthopoxviruses (Monkey pox)
<i>Burkholderia pseudomallei</i>	Paramyxoviruses (like Nipah and Hendra viruses)
<i>Brucella</i> sp.	New viruses (Not yet identified)
<i>Coxiella burnetii</i>	

Annual prioritisation of agents in focus

>>> A tool for continuous assessment of relevant pathogens has been developed and is used annually to evaluate the list of pathogens.

Pathogen assessment for ORM and IEM



List of agents with cross-border potential a survey was disseminated among SC

Group of pathogens	Rationale	0=None/Not known; 1=Small/Low; 2=Moderate; 3=Large/High			
		0	1	2	3
Specific pathogen	Reservoir, presence of the vector Risk of introduction/spread into EU Member States Treatment and prophylaxis Size of susceptible population Severity of disease Other networks involved				
			Yes	No	

Acknowledgement

- EC DG SANTE and Chafea
- All partners of the Joint Action

The screenshot shows the EMERGE website homepage. The main content area features a map of Europe and text describing the network's mission. A large, semi-transparent watermark 'Thank you for your attention!' is overlaid across the center of the page. The website header includes navigation links like 'About us', 'Partners', 'Events', 'Biosafety / Biosecurity', and 'QUANDHP'. The footer contains the website URL: <http://www.emerge.rki.eu>